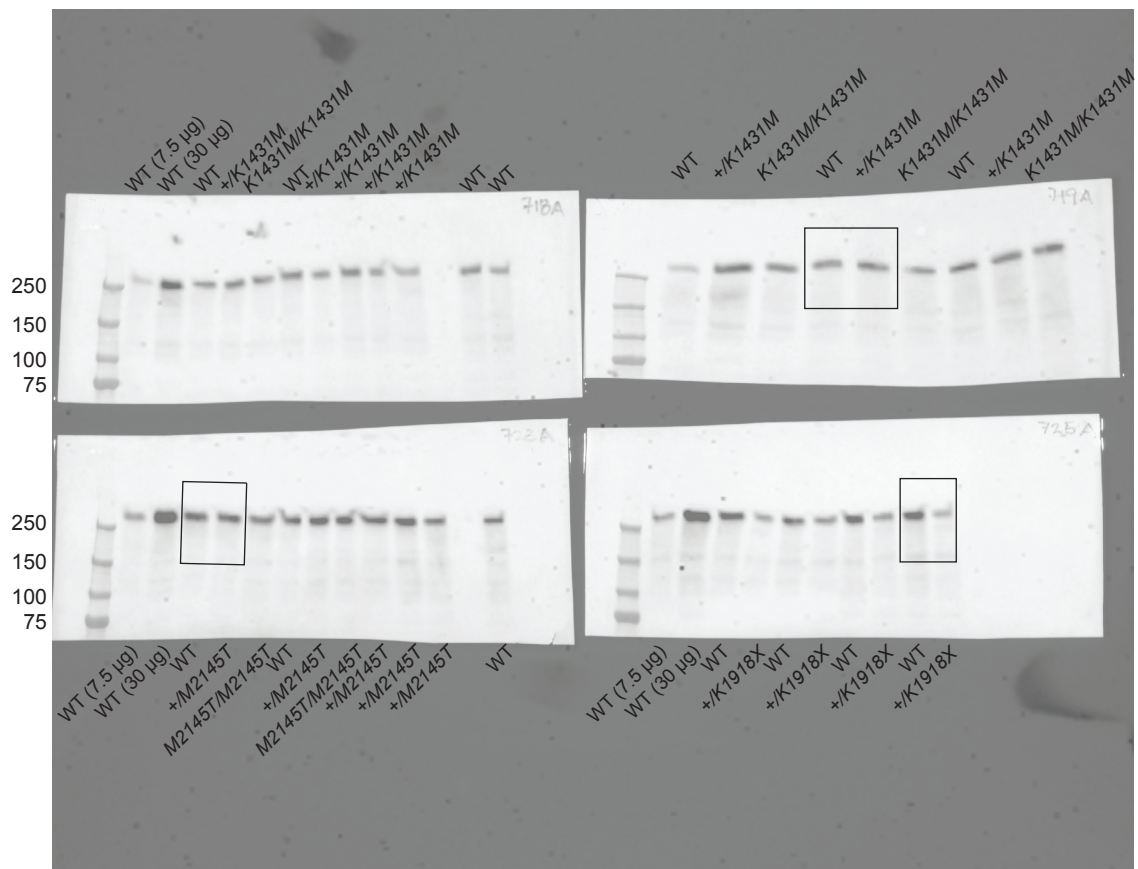


Ponceau S  
P0 brains



WB: Trio SR5-6  
P0 brains

**Figure 1-source data 2.** Original membranes corresponding to Figure 1, panel C.

15 µg brain lysate from P0 littermate pups were separated by gel electrophoresis and stained by Ponceau S (top), and blotted for Trio with an anti-Trio SR5-6 antibody (bottom). 7.5 µg and 30 µg WT brain lysate were included as internal controls. Boxes indicates cropped images used in final figure.